

REV	DATE	DESCRIPTION	BY	CHK
B	15/04/2008	PROJECT APPLICATION ISSUE	DH	RC
A	04/06/2007	FOR APPROVAL	VP	RC
			DM	CM

Copyright in the whole and every part of this drawing belongs to Cardno (NSW) Pty Ltd. All Rights Reserved 2005.  
 This drawing is prepared by Cardno (NSW) Pty Ltd. and for the use of the client. It is not to be used for any other purpose without the written consent of Cardno (NSW) Pty Ltd. The client is responsible for the accuracy of the information provided to Cardno (NSW) Pty Ltd. and for the accuracy of the information provided to any other person.

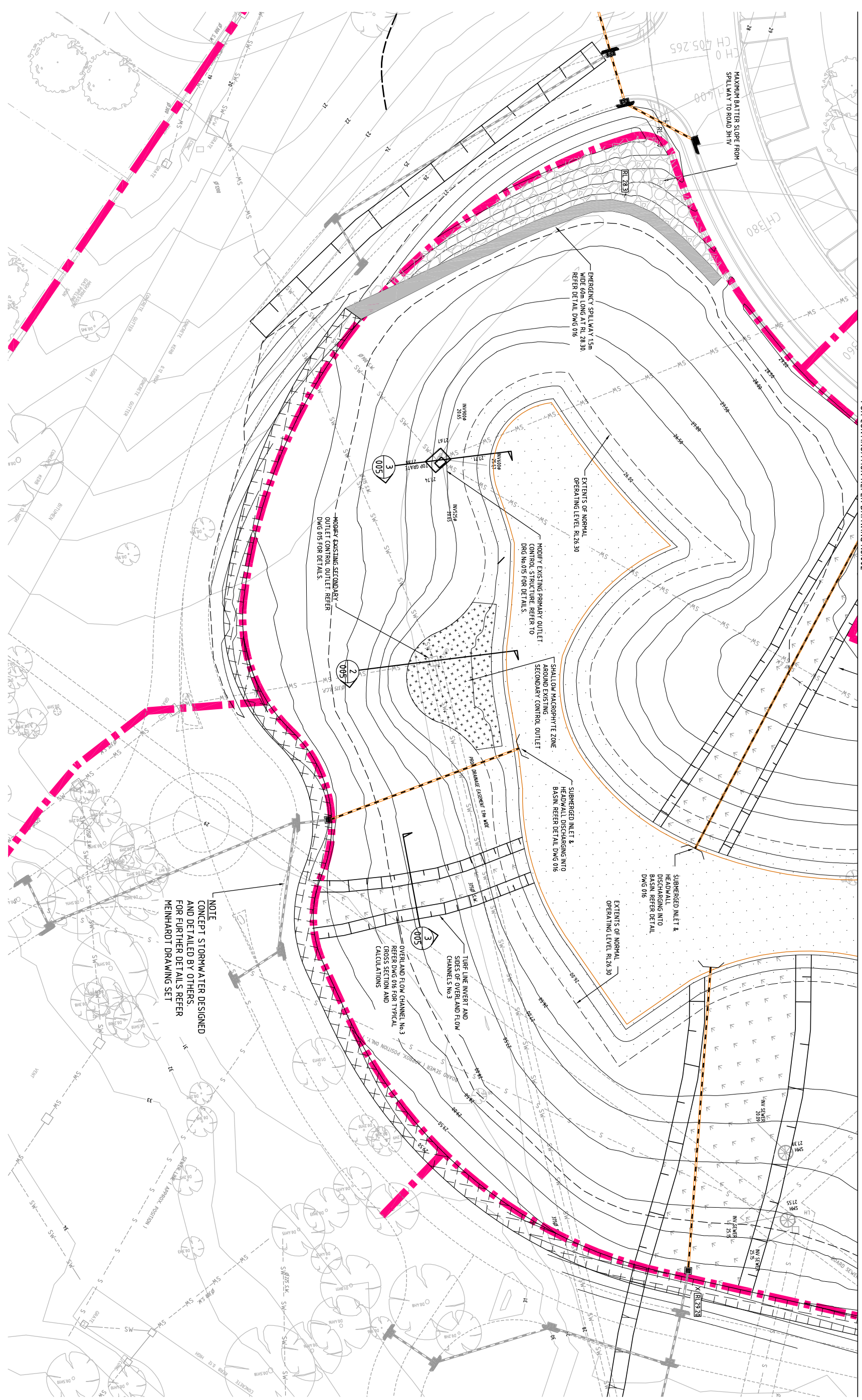
DESIGNED	CHECKED
RC	RC
VP	RC

Cardno (NSW) Pty Ltd  
 Level 3, 310 Pacific Highway, Gordon, NSW Australia 2072  
 Phone: 61 2 9360 7700 Fax: 61 2 9360 7992  
 Email: Sydney@cardno.com.au, Perth@cardno.com.au

**PELTON GROUP**  
 ROYAL REHABILITATION CENTRE SYDNEY  
 CHARLES STREET, RYDE  
 DETENTION BASIN & ASSOCIATED STORMWATER INFRASTRUCTURE  
 DETAIL PLAN - SHEET 2

**FOR APPROVAL**  
 DRAWING NUMBER  
**600110-D-003**

NOTE:  
 READ THIS DRAWING IN JUNCTION WITH DRAWING No.002



NOTE  
 CONCEPT STORMWATER DESIGNED AND DETAILED BY OTHERS. FOR FURTHER DETAILS REFER MEINHARDT DRAWING SET

OVERLAND FLOW CHANNEL No.3 REFER TO FOR TYPICAL CROSS SECTIONS AND CALCULATIONS

SHALLOW MACROPHYTE ZONE AROUND EXISTING SECONDARY CONTROL OUTLET

SUBMERGED INLET & HEADWALL DISCHARGING INTO BASIN REFER DETAIL DWG 018

SUBMERGED INLET & HEADWALL DISCHARGING INTO BASIN REFER DETAIL DWG 018

EMERGENCY SPILLWAY 1.5M WIDE 60M LONG AT RL 26.30. REFER DETAIL DWG 016

EXTENTS OF NORMAL OPERATING LEVEL RL 26.30

MODIFY EXISTING SECONDARY OUTLET CONTROL OUTLET REFER DWG 015 FOR DETAILS

FOR CONTINUATION REFER DRAWING No.002

