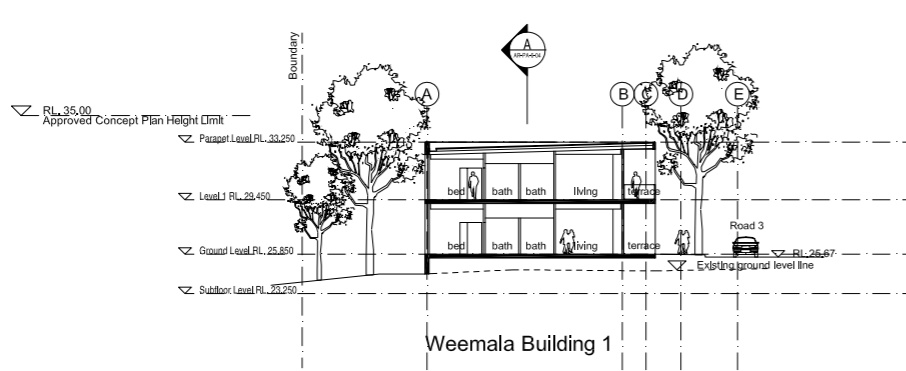
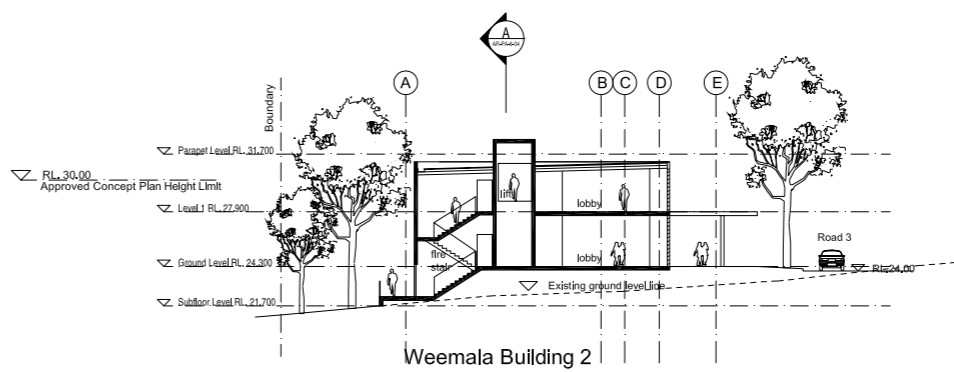


1 Section aa
1:200



2 Section bb
1:200



3 Section cc
1:200

Rev.	Date	Description	By	CHKD	Checked
02	14/04/08	PROJECT APPLICATION	BS	BS	
01	31/03/08	CONSULTANT ISSUE	JL		
00	06/02/08	CLIENT ISSUE	JL		

Royal Rehabilitation Centre Sydney
59 Charles Street, Ryde

Weemala
Sections



Check dimensions and site conditions prior to commencement of any work, the purchase or ordering of any material, fittings, plants, services or equipment and the preparation of shop drawings and/or the fabrication of any components.
Do not order drawings or refer to figures/dimensions etc. Any discrepancies should immediately be referred to the architect for clarification.
All drawings may not be reproduced or distributed without prior permission from the architect.

Scale	1/200 @ B1, 1/500@A3			
Drawn	BS			
Project No.	S10904			
Status	PA			
Plot Date	FRIDAY, APRIL 11, 2008, 2:47:34PM			
Plot File	S:\10904-10999\10904_PLOT08_RYDE002_REHAB_ILATION\CAD\PLOTS\DRAWING\04.ZWG			
Drawing No.	AR PA 6 04 02			
Discipline	Stage	Type	No.	Revision

Melbourne 1 Nicholson Street
Melbourne VIC 3000 Australia
T 03 8664 6200 F 03 8664 6300
email melb@batesmart.com.au
http://www.batesmart.com.au

Sydney 1/243 Liverpool Street
East Sydney NSW 2010 Australia
T 02 9380 7288 F 02 9380 7280
email syd@batesmart.com.au
http://www.batesmart.com.au

Bates Smart Pty Ltd ABN 70 004 999 400

BATESSMART
Urban Design, Architecture & Interior Design