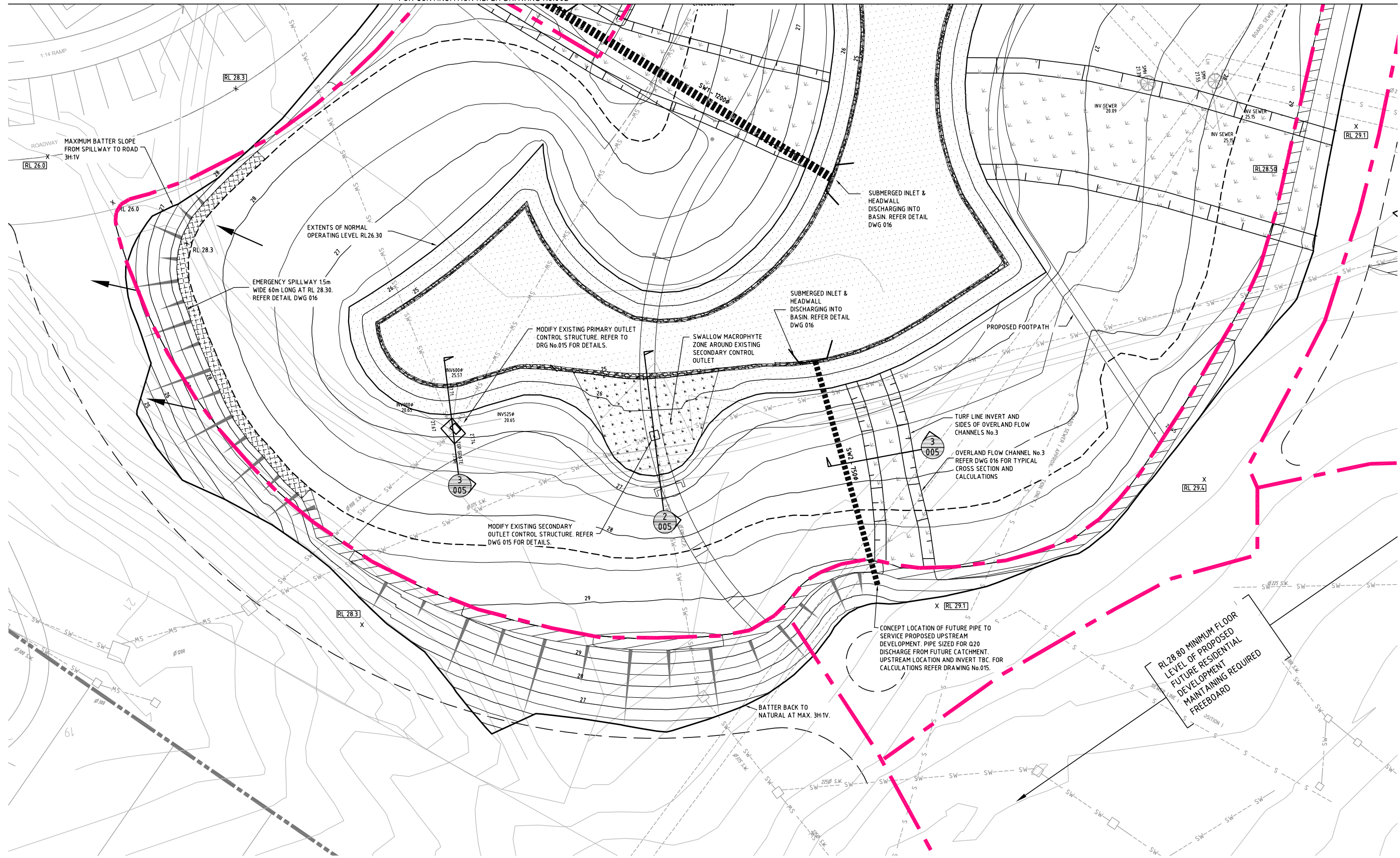


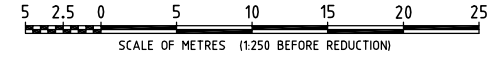
FOR CONTINUATION REFER DRAWING No.002



DATE PLOTTED: 05 June 2007 - 5:55pm

REF: X:\00000000\X\00000000\00000000.dwg
CAD FILE: X:\00000000\X\00000000\00000000.dwg

NOTE:
READ THIS DRAWING IN JUNCTION WITH DRAWING No.002



REV	DATE	FOR APPROVAL	REVISIONS	DRN	CHK
A	04/06/2007	FOR APPROVAL		VP	RC

© Cardno (NSW) Pty Ltd All Rights Reserved 2005.
Copyright in the whole and every part of this drawing belongs to Cardno (NSW) Pty Ltd and may not be used, sold, transferred, copied or reproduced in whole or in part in any manner or form or on any media, to any person other than by agreement with Cardno (NSW) Pty Ltd.

This document is produced by Cardno (NSW) Pty Ltd solely for the benefit of and use by the client in accordance with the terms of the retainer. Cardno (NSW) Pty Ltd does not and shall not assume any responsibility or liability whatsoever to any third party arising out of any use or reliance by third party on the content of this document.

ARCHITECT:	DESIGNED:	PREPARED:	CHECKED:
	RC	RC	
	DRAWN:	VP	
	REVIEWED:		
APPROVED:	DATE:	PROJECT MANAGER:	DATE:

PROJECT DIRECTOR:	DATE:	PROJECT MANAGER:	DATE:
-------------------	-------	------------------	-------

Cardno (NSW) Pty Ltd
ABN 95 001 145 035
Level 3, 910 Pacific Highway, Gordon, NSW Australia 2072
Phone (+61 2) 9496 7700 Fax (+61 2) 9499 3902
Email: sydney@syd.cardno.com.au Web: www.cardno.com.au

PELTON GROUP
ROYAL REHABILITATION CENTRE SYDNEY
CHARLES STREET, RYDE
DETENTION BASIN & ASSOCIATED STORMWATER INFRASTRUCTURE
DETAIL PLAN - SHEET 2

DRAWING STATUS:	FOR APPROVAL
DRAWING NUMBER:	600110-D-003
REV	A