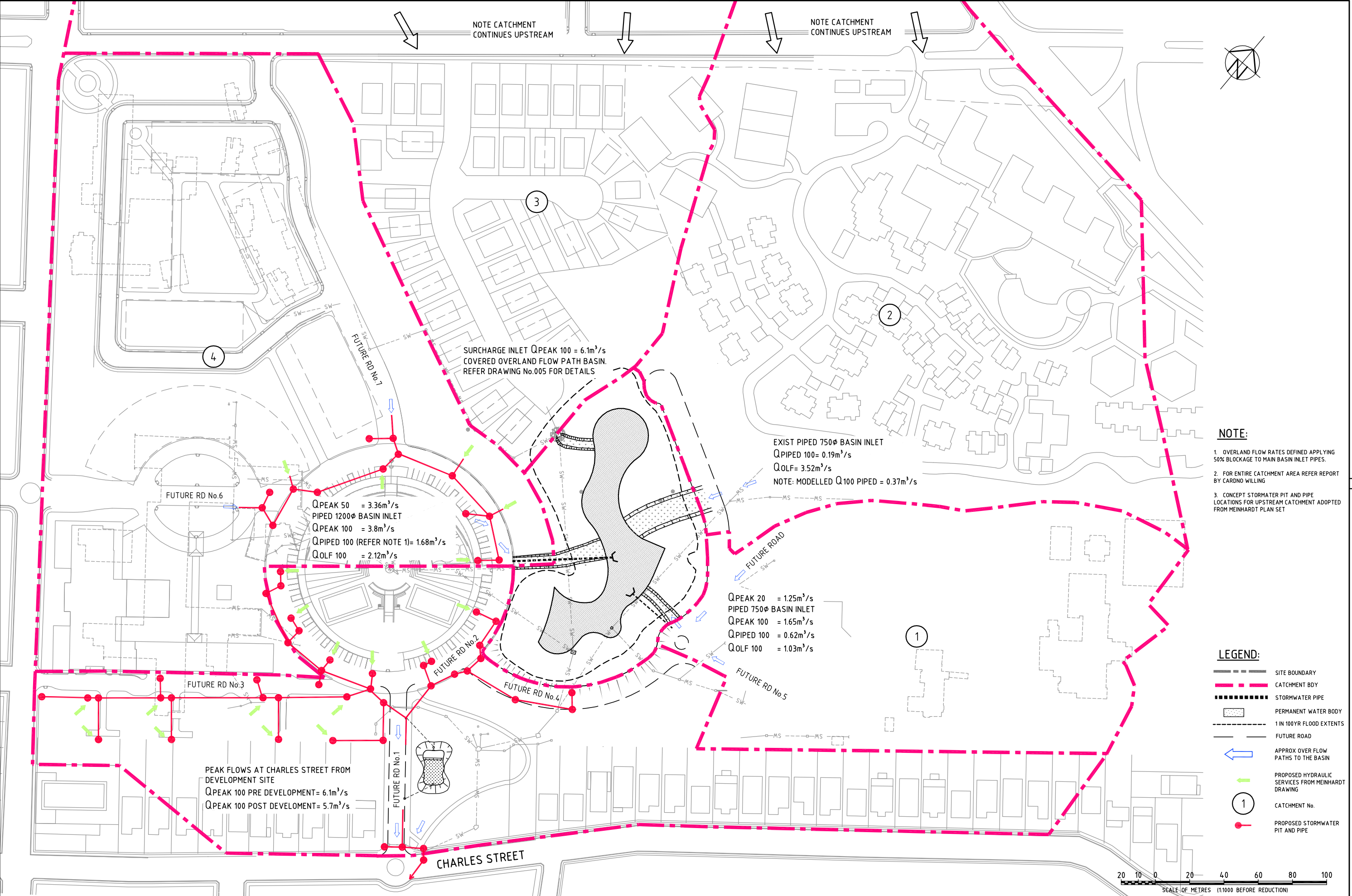


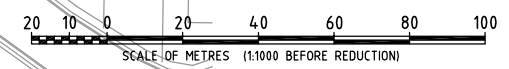
DATE PLOTTED: 05 June 2007 - 5:57pm

REF: X:\00000000\X\00000000\00000000.dwg
 CAD FILE: X:\00000000\X\00000000\00000000.dwg



- NOTE:**
- OVERLAND FLOW RATES DEFINED APPLYING 50% BLOCKAGE TO MAIN BASIN INLET PIPES.
 - FOR ENTIRE CATCHMENT AREA REFER REPORT BY CARDNO WILLING
 - CONCEPT STORMWATER PIT AND PIPE LOCATIONS FOR UPSTREAM CATCHMENT ADOPTED FROM MEINHARDT PLAN SET

- LEGEND:**
- SITE BOUNDARY
 - CATCHMENT BOD
 - STORMWATER PIPE
 - PERMANENT WATER BODY
 - 1 IN 100YR FLOOD EXTENTS
 - FUTURE ROAD
 - APPROX OVER FLOW PATHS TO THE BASIN
 - PROPOSED HYDRAULIC SERVICES FROM MEINHARDT DRAWING
 - 1 CATCHMENT No.
 - PROPOSED STORMWATER PIT AND PIPE



| REV | DATE | FOR APPROVAL | REVISIONS | DRN | CHK |
|-----|------------|--------------|-----------|-----|-----|
| A | 04/05/2007 | FOR APPROVAL | | VP | RC |

© Cardno (NSW) Pty Ltd All Rights Reserved 2005.
 Copyright in the whole and every part of this drawing belongs to Cardno (NSW) Pty Ltd and may not be used, sold, transferred, copied or reproduced in whole or in part in any manner or form or on any media, to any person other than by agreement with Cardno (NSW) Pty Ltd.

This document is produced by Cardno (NSW) Pty Ltd solely for the benefit of and use by the client in accordance with the terms of the retainer. Cardno (NSW) Pty Ltd does not and shall not assume any responsibility or liability whatsoever to any third party arising out of any use or reliance by third party on the content of this document.

ARCHITECT:

| | | | |
|-----------|----|-----------|----|
| DESIGNED: | RC | CHECKED: | RC |
| DRAWN: | VP | REVIEWED: | |

APPROVED:

| | | | |
|------------------|------|-----------------|------|
| PROJECT DIRECTOR | DATE | PROJECT MANAGER | DATE |
|------------------|------|-----------------|------|

Cardno
 Cardno (NSW) Pty Ltd
 ABN 95 001 145 035
 Level 3, 910 Pacific Highway, Gordon, NSW Australia 2072
 Phone (+61 2) 9496 7700 Fax (+61 2) 9499 3902
 Email: sydney@yd.cardno.com.au Web: www.cardno.com.au

PELTON GROUP
 ROYAL REHABILITATION CENTRE SYDNEY
 CHARLES STREET, RYDE
 DETENTION BASIN & ASSOCIATED STORMWATER INFRASTRUCTURE
 STORMWATER CATCHMENT PLAN

DRAWING STATUS:

FOR APPROVAL

DRAWING NUMBER: **600110-D-010**

REV: **A**